

Q2 2026

# EXPLORING FOR HIGH-GRADE GOLD

IN UNDEREXPLORED FINLAND

**FINEX**  
METALS

TSX-V: **FINX**

[FinExMetals.net](http://FinExMetals.net)

NEWQUEST  
CAPITAL

# Cautionary Note

## Regarding forward-looking information

Investors are cautioned that, except for statements of historical fact, certain information contained in this document includes “forward-looking information”, with respect to a performance expectation for FinEx Metals. Such forward-looking statements are based on current expectations, estimates and projections formulated using assumptions believed to be reasonable and involving a number of risks and uncertainties which could cause actual results to differ materially from those anticipated. Such factors include, without limitation, the anticipated listing of the Company’s common shares for trading on a public stock exchange and the timing thereon, the ability of the Company to obtain sufficient financing to fund its business activities and plans, fluctuations in foreign exchange markets, the price of commodities in both the cash market and futures market, changes in legislation, taxation, controls and regulations of national and local governments and political and economic developments in Finland, Canada and other countries where the Company carries out or may carry out business in the future, the availability of future business opportunities and the ability to

successfully integrate acquisitions or operational difficulties related to technical activities of mining and reclamation, the speculative nature of exploration and development of mineral deposits located, including risks in obtaining necessary licenses and permits, reducing the quantity or grade of reserves, adverse changes in credit ratings, and the challenge of title. The Company does not undertake an obligation to update publicly or revise any forward-looking statements or information, whether as a result of new information, future events or otherwise, unless so required by applicable securities laws. Some of the results reported are historical and may not have been verified by the Company.

All technical information in this presentation have been reviewed and approved by Dr. Petri Peltonen MAusIMM(CP), EurGeol, a Qualified Person as defined by National Instrument 43-101.

1) Mineralization of adjacent projects may not be indicative of the mineralization on FinEx Metals’ projects.

## GLOBAL ALLIANCE OF EXPLORATION COMPANIES



Teck Strategic Investment

**Cu** **Mo** **Au**  
Copper Molybdenum Gold  
CSE: **REDC**  
OTCQB: **REDRF**

REDCANYONRESOURCES.COM



Newmont Earn-in Partner

OceanaGold Earn-in Partner

Centerra Gold Earn-in Partner

**Au** **Ag**  
Gold Silver  
CSE: **HWG**  
OTCQX: **HWAUF**

HEADWATERGOLD.COM



### CONDUIT NICKEL

**Ni** **Cu**  
Nickel Copper  
CONDUITNICKEL.COM



**Au**  
Gold  
TSX-V: **FINX**

FINEXMETALS.NET



AngloGold Ashanti Earn-in Partner

**Cu** **Au**  
Copper Gold  
CSE: **AUCU**  
OTCQB: **AUCUF**  
FSE: **5VJ**

INFLECTIONRESOURCES.COM

# Golden Opportunity in Finland



**Vision:** Discover Finland's next high-grade gold deposit



**Large portfolio of 100% owned projects** located in Northern Finland



Ruoppa Project adjoins Europe's largest gold mine, **Agnico Eagle's** Kittilä mine<sup>1</sup>



10 holes drilled at Ruoppa in 2025 intersected gold, highlighting the robust nature of the gold mineralized system



Kero gold project is located 20 km from **Ikkari deposit**<sup>1</sup> is fully permitted and drill-ready



2 fully permitted gold projects with planned drilling scheduled for H2 2026

<sup>1</sup>) Mineralization of adjacent projects may not be indicative on the mineralization on FinEx Metals' projects

# Experienced Leadership Team

## Management Team

**Tero Kosonen | Chairman & CEO | MSc - Economics**  
Co-Founder of NewQuest Capital, a private equity/venture capital group. 30 years of experience in management roles, entrepreneurial ventures & investments in natural resources.



**Alistair Waddell | Director | BSc (Hons.), MAusIMM**  
Geologist with 30 years of experience. President & CEO of Inflection Resources, Chairman of Headwater Gold. Previously VP Greenfields Exploration for Kinross & CEO of GoldQuest Mining. Co-Founder of NewQuest Capital.



**Jeffrey R. Wilson | Director**  
25 years of experience in mining sector. President & CEO of Precipitate Gold and Partner of Acuity Advisory. Part of founding team at Silver Quest Resources.



**Fernando Costa | Director | CPA, CA**  
Chartered Professional Accountant with 30+ years of experience working with public companies in the resource and other industries. Chairman of the audit committee.



**Sandra Wong | CFO | CPA, CGA**  
Chartered Professional Accountant with 20+ years of experience with numerous public companies. Extensive experience in accounting, corporate secretarial & administrative services.



## Technical Team

**Dr. Petri Peltonen | Chief Geologist | MAusIMM(CP), EurGeol (Consultant)**  
30+ years of experience, expertise in magmatic Ni-Cu-PGE, gold, iron ore, VMS & diamonds. Former Exploration Manager – Europe FQM. Associated Professor of Economic Geology - University of Helsinki.



**Eetu Jokela | Project Manager | MSc - Geology**  
Strong background in mineral exploration of orogenic gold and IOCG deposits in the CLGB. Experience with major mining and consulting companies in Finland: Agnico Eagle and AFRY.



**Olli Silvonen | Exploration Geologist | MSc - Geology**  
Experience in regional greenfield exploration of orogenic gold & Ni-Cu-PGE deposits in Finland. Strong local knowledge of the Kittilä area and its geology.



**Jukka Jokela | Senior Advisor | MSc - Geology**  
35+ years of experience. Previous CEO Anglo American Sakatti Mining and several other Senior roles. Highly experienced in ESG & co-operation with key stakeholders in the Nordic countries.



**Dr. Pasi Eilu | Senior Advisor | PhD - Geology**  
40 years of experience in geoscientific research & exploration in greenstone belts, orogenic gold, IOCG, critical minerals. Associated Professor of Economic Geology at University of Turku, Finland.



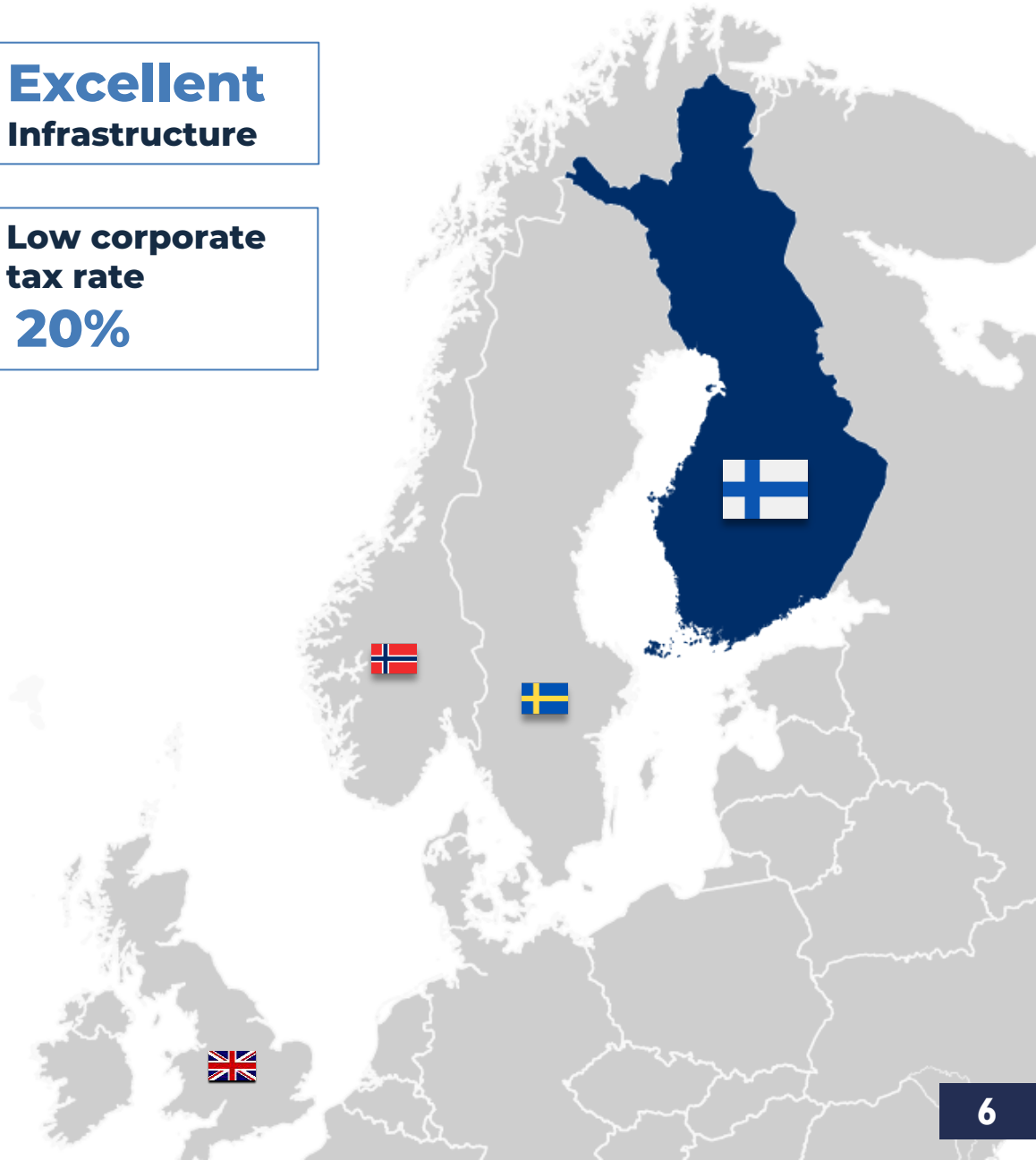
**Phil Smerchanski | Senior Advisor | M.Econ.Geol., P.Geo.**  
25 years of experience in magmatic nickel sulphide and orogenic gold exploration. Senior technical roles at Oxygen Capital, Anglo American, including work at Sakatti deposit in Finland during initial drilling.



# Finland: An Underexplored Jurisdiction With Significant Potential For Discovery

**Excellent  
Infrastructure**

**Low corporate  
tax rate  
20%**



## Top Jurisdiction

Finland is consistently ranked as one of the world's most attractive locations for mining investment <sup>1</sup>



## EU's Largest Gold Mine

Finland hosts the largest primary gold producing mine in Europe: Agnico Eagle's Kittilä mine <sup>2</sup>



## Operating Mines

41 mines are in operation including battery metals and gold <sup>3</sup>

1) Fraser Institute 2024 Annual Survey of Mining Companies 2) Mineralization of adjacent Projects may not be indicative on the mineralization on FinEx Metals Project 3) Finnish Safety and Chemicals Agency (Tukes) Review of mining authority Tukes on exploration and mining industry in Finland in 2024

# Excellent Infrastructure

**Efficient Transport Network:** Roads, railways and ports provide year-round access to key projects

**Advanced Digital Infrastructure:** Widespread 5G connectivity at project sites

**Reliable Power Grid:** Stable power grid, increasingly powered by renewable sources like hydro and wind

**Regional Airports:** Airports in Rovaniemi, Kittilä, and Oulu offer flights to major European cities

**Government Support:** Transparency and streamlined permitting processes to encourage resource exploration and development



# Northern Finland

## An Attractive Mining Jurisdiction

### Opportunity for new discoveries

Central Lapland Greenstone Belt (CLGB) is geologically comparable to other major greenstone belts globally but remains underexplored

### Home to Europe's largest gold producer:

Agnico Eagle's Kittilä Mine - 218,860 ounces of gold produced in 2024<sup>1</sup>

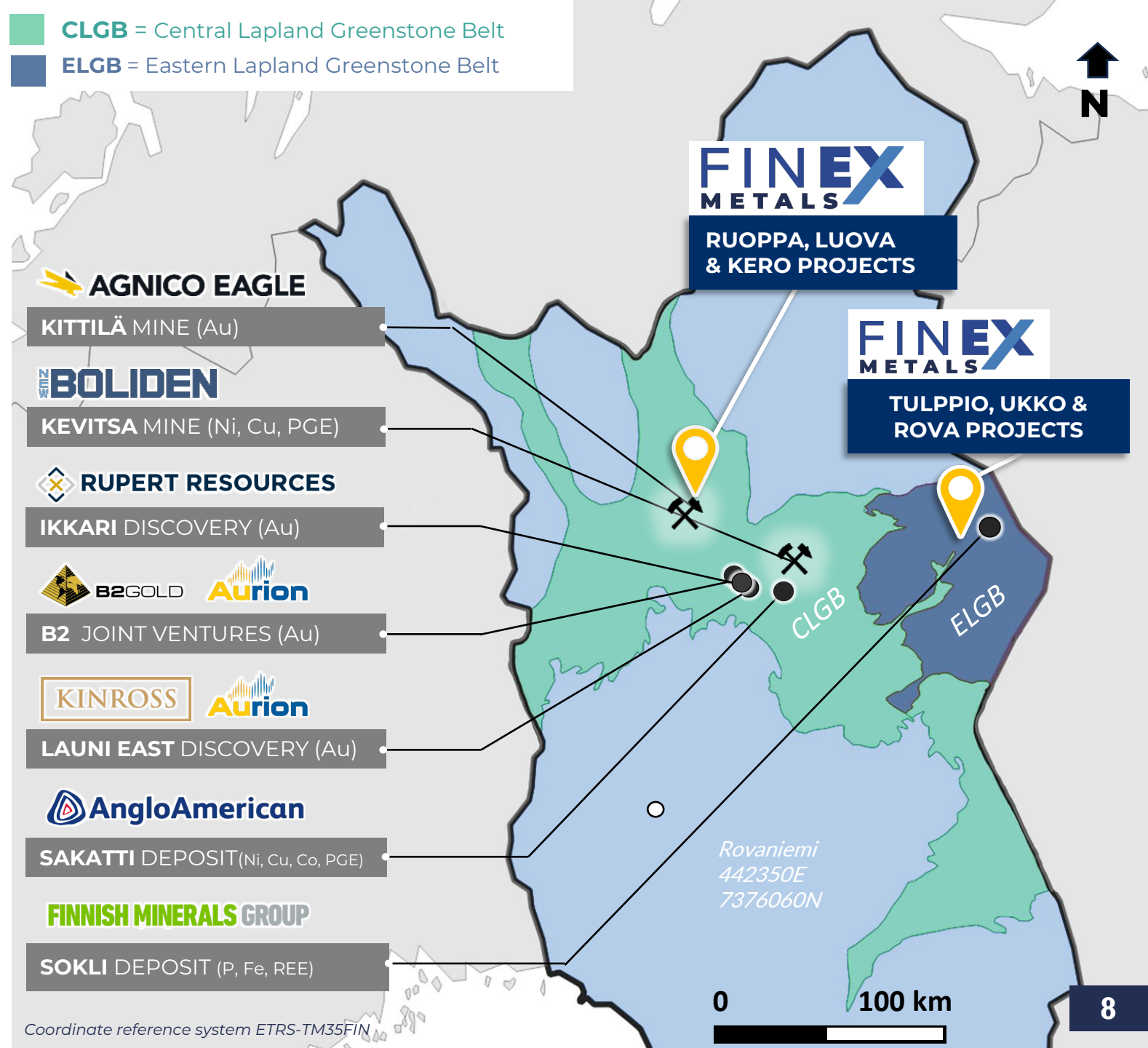
### Recent major discoveries:

Rupert Resources' Ikkari Project is one of the most recent exciting gold discoveries with a 2025 PFS indicating NPV of US\$1.7B and 38% IRR\*

**Active key players:** CLGB is becoming more active, attracting major mining companies, due to significant recent discoveries



*\*see Rupert Resources Ltd. news release dated February 18, 2025 Rupert Resources completes prefeasibility study for Ikkari 1) Mineralization of adjacent projects may not be indicative on the mineralization on FinEx Metals' projects*



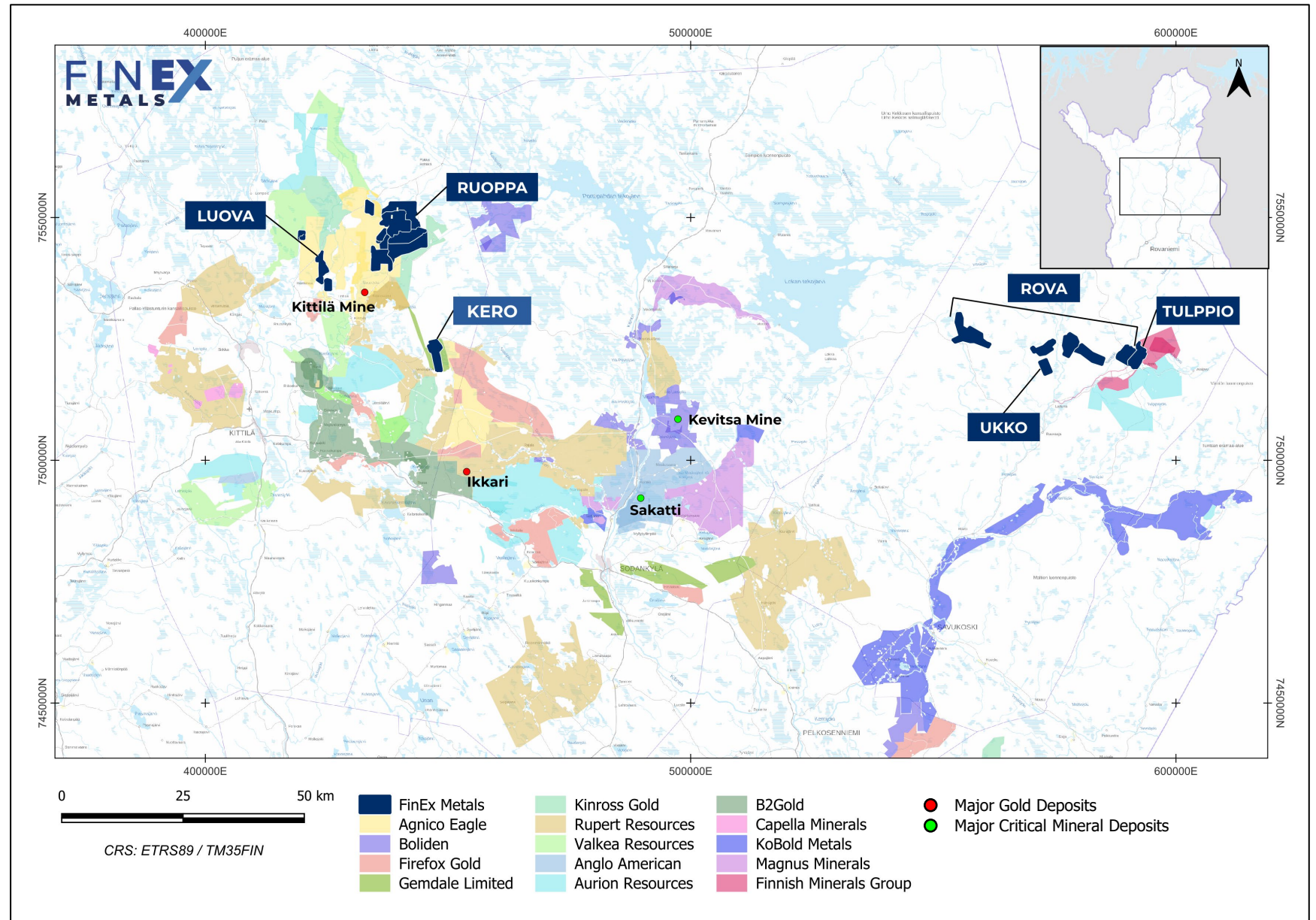
Coordinate reference system ETRS-TM35FIN

# FinEx Project Portfolio

FinEx is advancing a portfolio of 100%-owned, royalty-free gold, nickel and PGE exploration projects in northern Finland

Strategically located across the Central Lapland Greenstone Belt and Eastern Lapland Greenstone Belt, two of Finland's most prospective mineral belts

Projects are near existing mining operations and benefit from strong infrastructure and a stable jurisdiction, supporting efficient exploration



# Ruoppa

Flagship High-Grade  
Gold Project



17 km southwest

**KITILÄ MINE (Au)**

 **AGNICO EAGLE**

# Ruoppa

## Regional Setting

Project adjoins Agnico Eagle's Kittilä mine land position <sup>1</sup>

Brownfields exploration environment

Project located ~17km from Kittilä mine

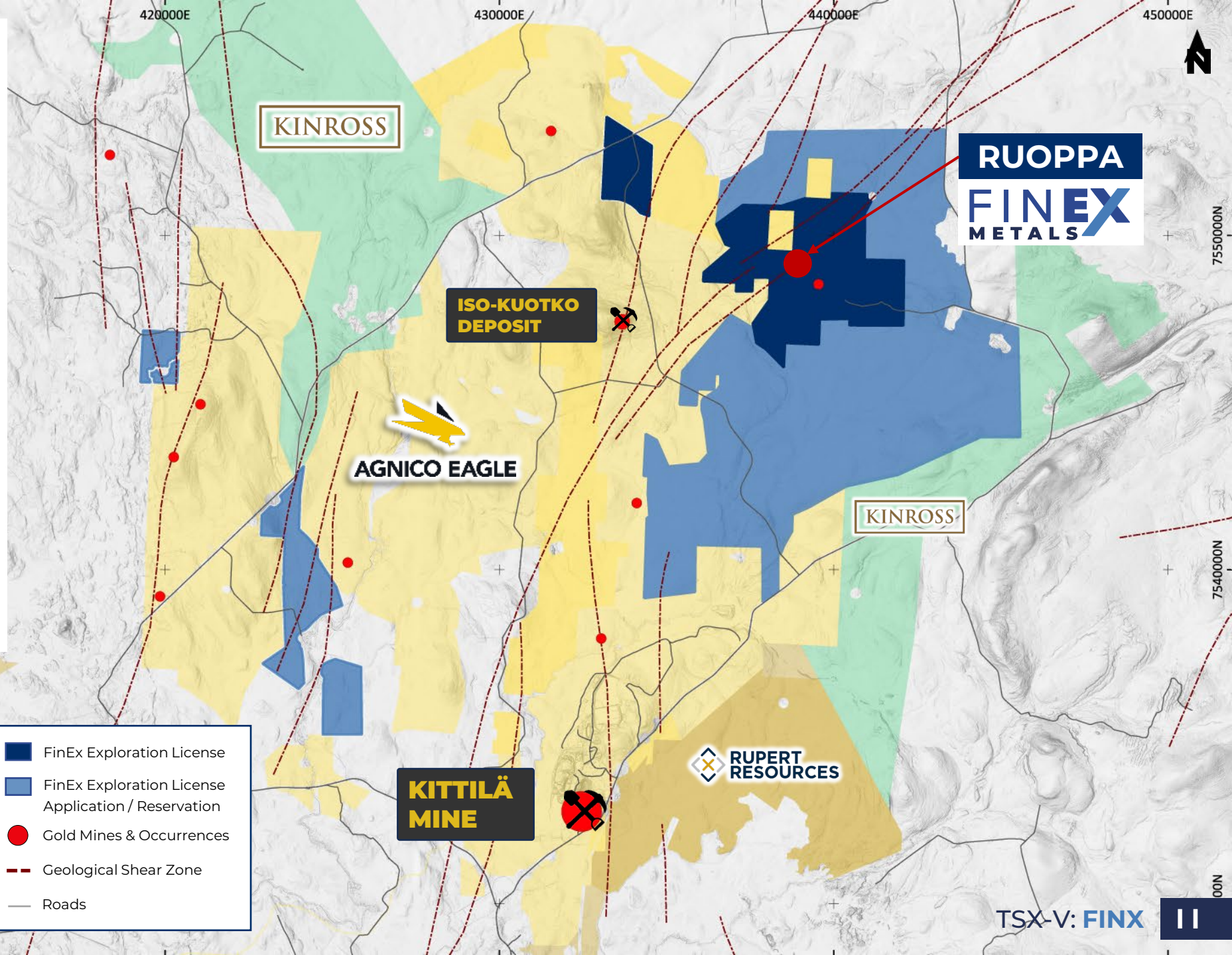
Similar geological setting to Kittilä mine

Agnico Eagle's Iso-Kuotko satellite deposit part of long-term Kittilä mine plan

<sup>1</sup> Mineralization of adjacent projects may not be indicative on the mineralization on FinEx Metals' projects  
 Data from Tukes, GTK & National Land Survey of Finland. Data as of 11.02.2025. Coordinate reference system ETRS-TM35FIN



- FinEx Exploration License
- FinEx Exploration License Application / Reservation
- Gold Mines & Occurrences
- Geological Shear Zone
- Roads



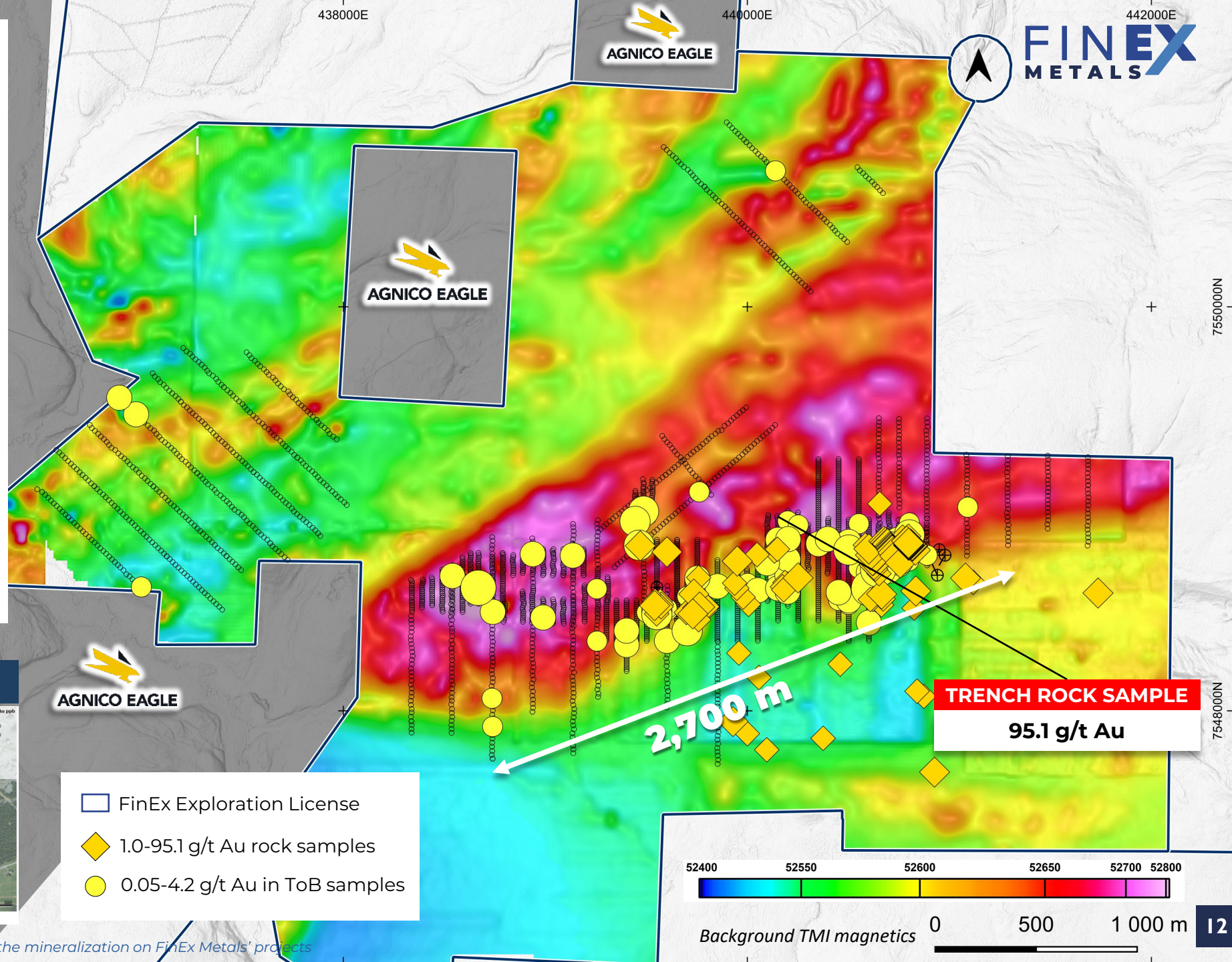
# Ruoppa Project Sampling

~2,700 m long anomalous zone of gold defined

Top-of-Bedrock (ToB) drilling identified numerous high-potential gold targets

Surface rock sample values (quartz carbonate veins) are among the highest found in the CLGB

Surface sampling values up to 95.1 g/t Au



## Kittilä Mine for scale <sup>1</sup>



Isometric view of original BOT sampling results at Kittilä (BOT data from GTK's website).

- FinEx Exploration License
- ◆ 1.0-95.1 g/t Au rock samples
- 0.05-4.2 g/t Au in ToB samples



<sup>1</sup>) Mineralization of adjacent projects may not be indicative on the mineralization on FinEx Metals' projects

# Ruoppa Gold Project - Work Completed 2025



<b>2,483 m</b>	<b>Diamond Drilling</b>	<p><b>Intercepts include:</b>  <b>RUO25D001</b> 9.85 metres averaging 1.23 g/t gold including 5.79 g/t gold over 0.95 metres  <b>RUO25D011 9.20</b> m averaging 0.66 g/t gold  <b>RUO25D008</b> 1.65 m grading 3.26 g/t gold and 1.1 m grading 4.92 g/t gold</p>
<b>553</b>	<b>ToB Drilling</b>	553 samples collected (Ruoppa East – 395; Heinikko – 158) to refine gold-in-soil anomalies and support drill targeting
<b>12</b>	<b>Trenches</b>	12 trenches totaling 1,041 m (10 at Ruoppa East, 2 at Outamaa) exposing key structures and lithological contacts
<b>328</b>	<b>Soil Samples</b>	328 samples (Nuuti – 291; Ruoppa East – 14; Central – 23) expanding coverage into new terrain
<b>382</b>	<b>Rock Samples</b>	382 samples collected from Ruoppa East and Outamaa
<b>140 km<sup>2</sup></b>	<b>Drone Magnetic Survey</b>	3,080-line km magnetic survey covering ~140 km <sup>2</sup>

# Kero Gold Project

## District-Scale Position in Finland's Premier Gold Belt

**100%-owned**, royalty-free exploration license covering an orogenic gold prospect in northern Finland's Central Lapland Greenstone Belt (CLGB)

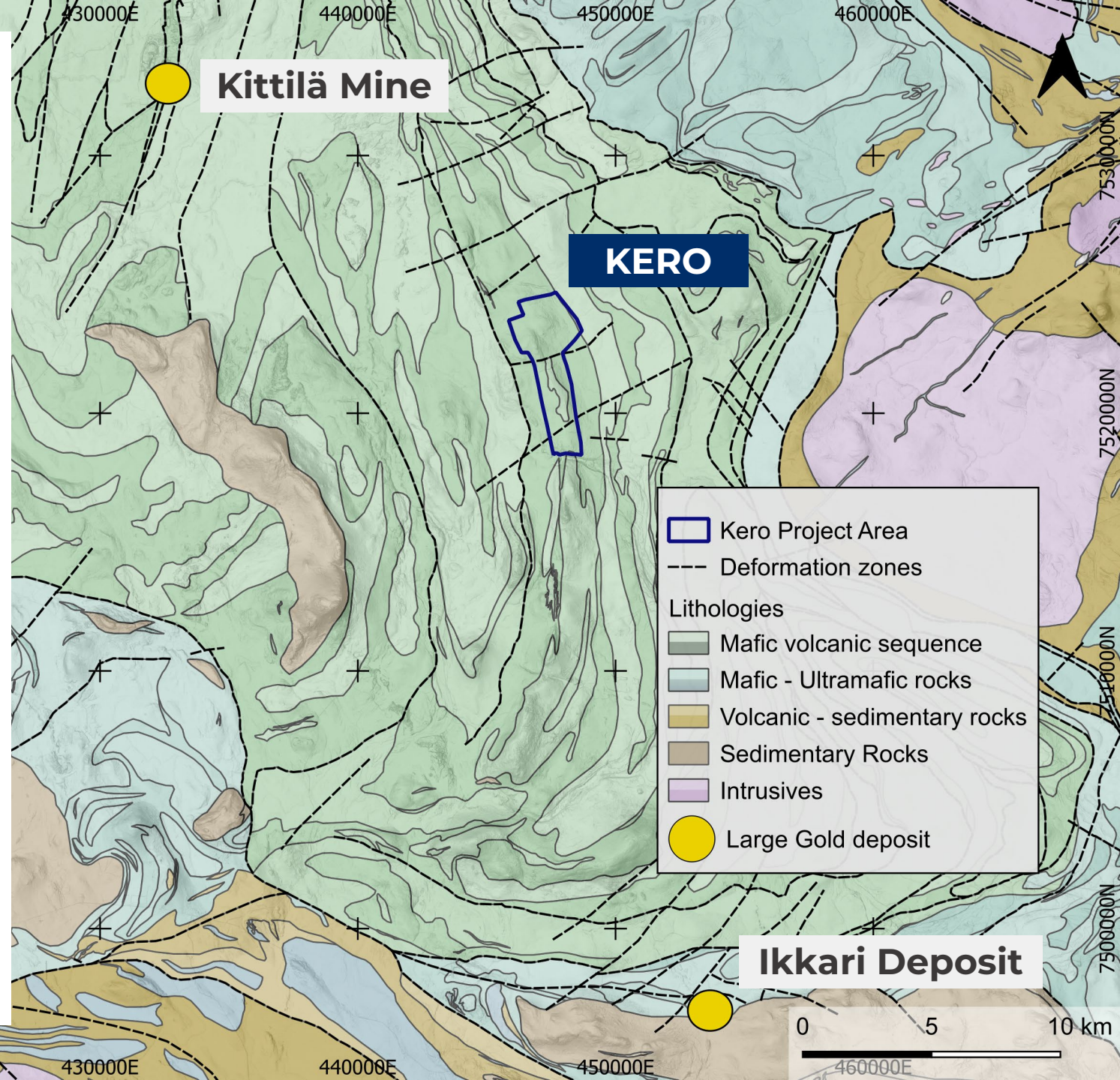
**Strategic district positioning:** approximately 15 km SE of Agnico Eagle's Kittilä mine and ~20 km NW of Rupert's Ikkari discovery

Located in the same proven gold belt that hosts **Kittilä** and **Ikkari**, two of Europe's most significant gold deposits, reinforcing the district's scale and endowment<sup>1</sup>.

### Promising geology for orogenic gold and year-round exploration possibility:

1. Complex structural framework with multiple deformation orientations and junctions
2. Carbonate-sulphide bearing veins and intense hydrothermal alteration
3. Well conditioned gravel road leading to the area

**FINEX**  
METALS



# Kero Gold Project

## Historic Gold Intercepts + 2026 Drill-Ready Upside

**Gold endowment already confirmed:** GTK work >1 km gold-bearing trends with multiple zones

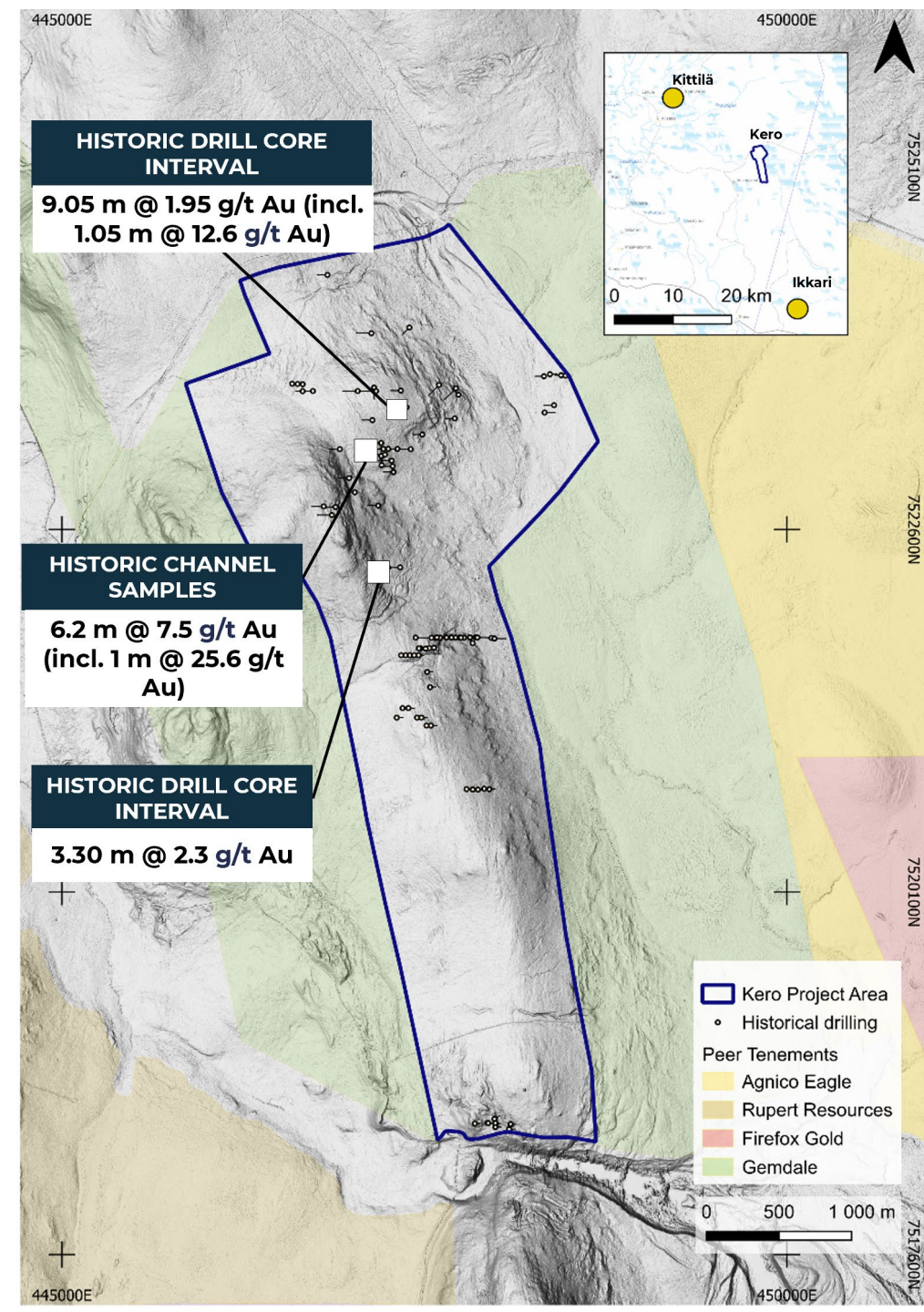
**Best historic drill:** 9.05 m @ 1.95 g/t Au (incl. 1.05 m @ 12.6 g/t Au)

**Channel sampling:** 6.2 m @ 7.5 g/t Au (incl. 1 m @ 25.6 g/t Au and 1 m @ 16.4 g/t Au)

Mineralization linked to shear/fault zones + hydrothermal alteration (carbonate/sericite/chlorite/albite) consistent with orogenic systems

### Next Steps

- Re-interpret historical geophysics/structure with modern techniques
- Systematic till/bedrock sampling (southern area untested) Drill test high-grade surface targets not yet drilled
- Target structural intersections + iron-formation horizons
- Test deep conductive VTEM zones; initial diamond drill program planned H2 2026

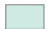



# ELGB Landholdings

## Key Players

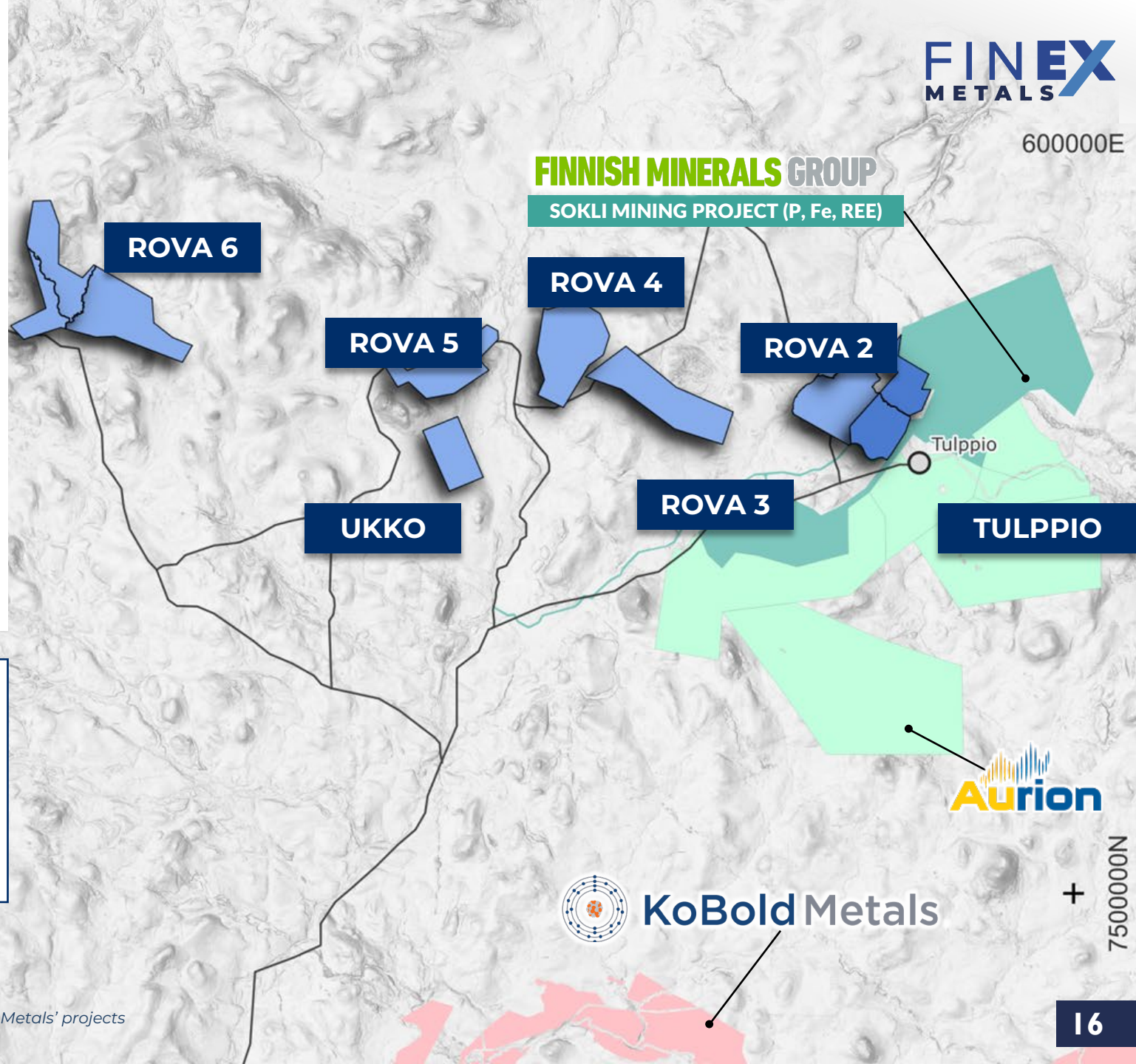
**FinEx Metals holds a significant land position** on the prospective Eastern Lapland Granite-Greenstone Belt. Exploration and mining companies are increasingly turning focus towards this belt

**Tulppio adjoins the Sokli Mining project<sup>1</sup>** a world-class Phosphate, Fe & REE deposit, operated by Finnish Minerals Group

	FinEx Exploration Permits
	FinEx Exploration Permit Applications
	Sokli Mining Project
	Aurion Resources Exploration Permits & Reservations
	Kobold Metals Exploration Permits
	Road



<sup>1</sup>) Mineralization of adjacent projects may not be indicative on the mineralization on FinEx Metals' projects  
Data from Tukes, GTK & National Land Survey of Finland



# Sokli Deposit:

## Europe's Premier Critical Minerals Deposit Adjacent to Tulppio



**Finland's most significant critical raw materials project** located in Savukoski, Eastern Lapland Greenstone Belt. Operated by Finnish Minerals Group

### Primary Resources:

- Phosphate
- Iron (Fe)
- Rare Earth Elements (REE)
- Manganese, Vermiculite, Niobium, Copper

**EUR 65 M**

**via strategic government investment** recently announced to advance project development

**20%**

**of EU phosphate demand** – can potentially be sourced from Sokli



**FinEx's Tulppio Project** adjoins the Sokli Mining Project<sup>1</sup>, positioning the Company in a region with:

- Proven world-class critical minerals endowment
- Strong government support for mining development
- Excellent infrastructure and access
- Multi-commodity exploration potential (Ni-Cu-Co-PGE-Au at Tulppio)



*“Tulppio's Ni-PGE potential is significant, and it should be taken into account in the design of the Sokli mine.”*

- **Geological Survey** of Finland, 2010

<sup>1</sup>) Mineralization of adjacent projects may not be indicative on the mineralization on FinEx Metals' projects  
Data from Tukes, GTK & National Land Survey of Finland

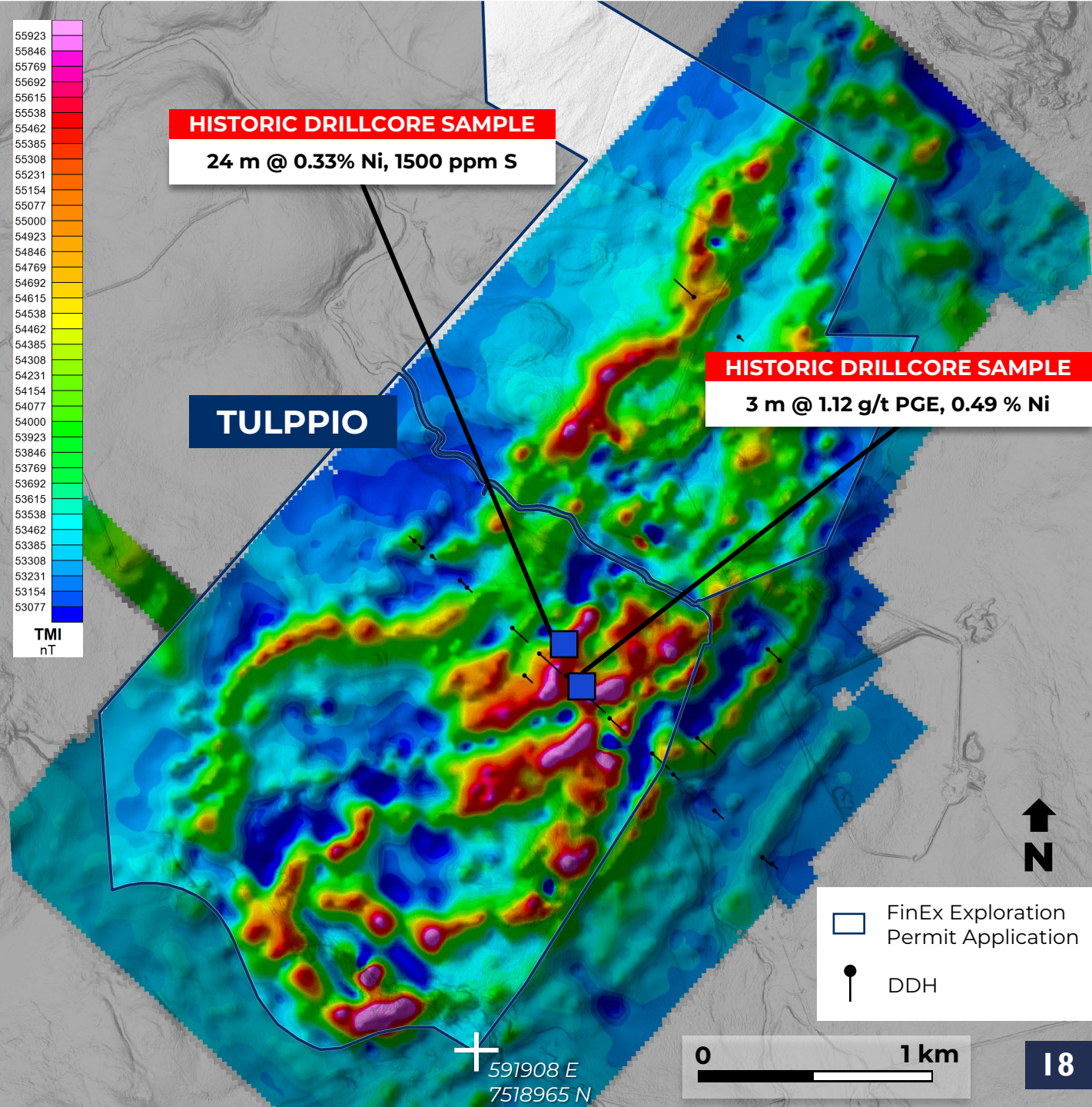
# Tulppio Project

**Targeting nickel sulphides.** Hosts large (5 x 2 km<sup>2</sup>) ultramafic intrusion. Gravity survey suggests intrusion extends to ~2 km depth

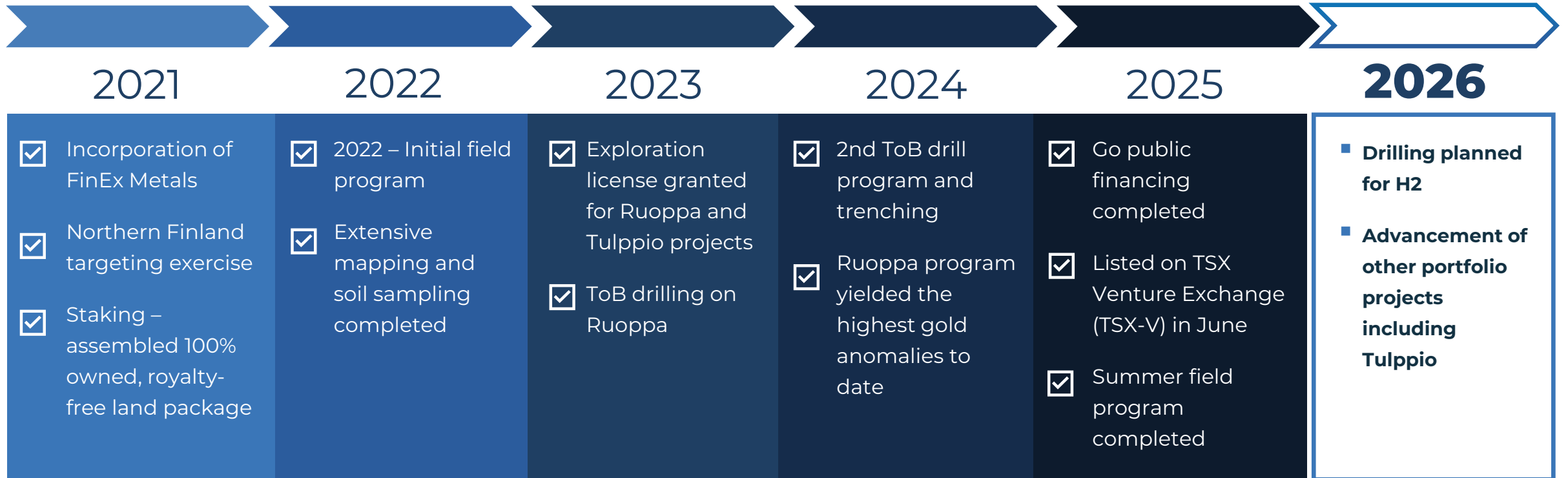
**Historic shallow drilling (<100 m) encountered:**

- 3 m @ 1.12 g/t Pt+Pd, 0.49% Ni (1.5 m @ 1.54 g/t Pt+Pd)
- 24 m @ 0.33% Ni & 1500 ppm S. Highest Ni (0.53%) with 4600 ppm S

**Ionic Leach soil sampling survey** identified multiple significant Ni-Co-Cu-Pd-Au anomalies



# Milestones & Catalysts



# Investment Highlights

1

**100%-owned, royalty-free portfolio** providing full leverage to discovery across Finland's premier greenstone belts

2

**Experienced team** with extensive technical & financial knowledge combined with strong local expertise

3

**Excellent infrastructure** with easy access to roads, ports, 5G network and renewable energy

4

**2025 drill program** highlights the robust nature of the gold mineralized system at Ruoppa project

5

**Drilling planned** on 2 fully permitted gold projects in 2026



# Capital Structure



Outstanding shares

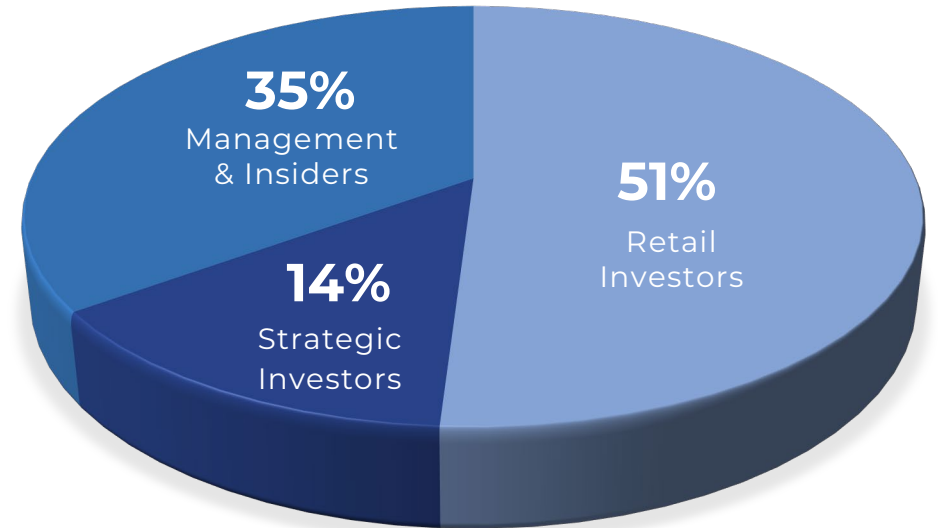
**73.7 M**

Options

**7.1 M**

Warrants

**17.6 M**



Included among strategic investors:



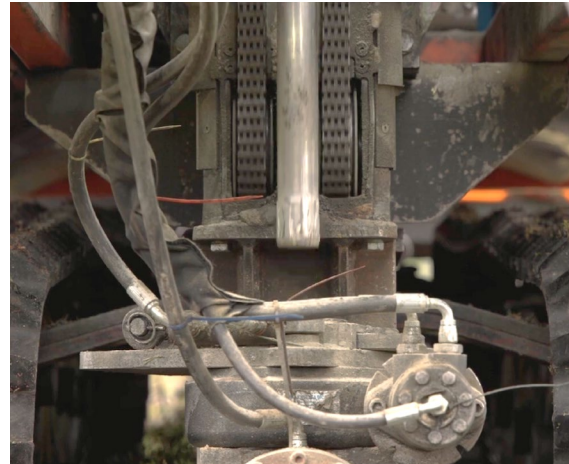
# Appendix



# Top of Bedrock (ToB) Sampling

**Top-of-Bedrock (ToB) Drilling** is a rapid, cost-effective, low-impact method widely used to sample the interface between overburden and bedrock

Method is ideal for exploring under glacial till cover, helping identify buried mineralization with minimal disturbance



## Access

Lightweight drills access snowy or forested terrain with minimal clearing required

## Drilling to Bedrock

Drill cuts through overburden and glacial till, until hitting solid bedrock

## Sample Collection

Collection of weathered bedrock

## Logging & Handling

Samples are described, labeled and secured for transport to the lab

# Luova Project

Located within the thickest, core part of the **CLGB**, less than 10 km from Kittilä mine<sup>1</sup> and prospects (e.g. Hanhima and Hakokodanmaa)

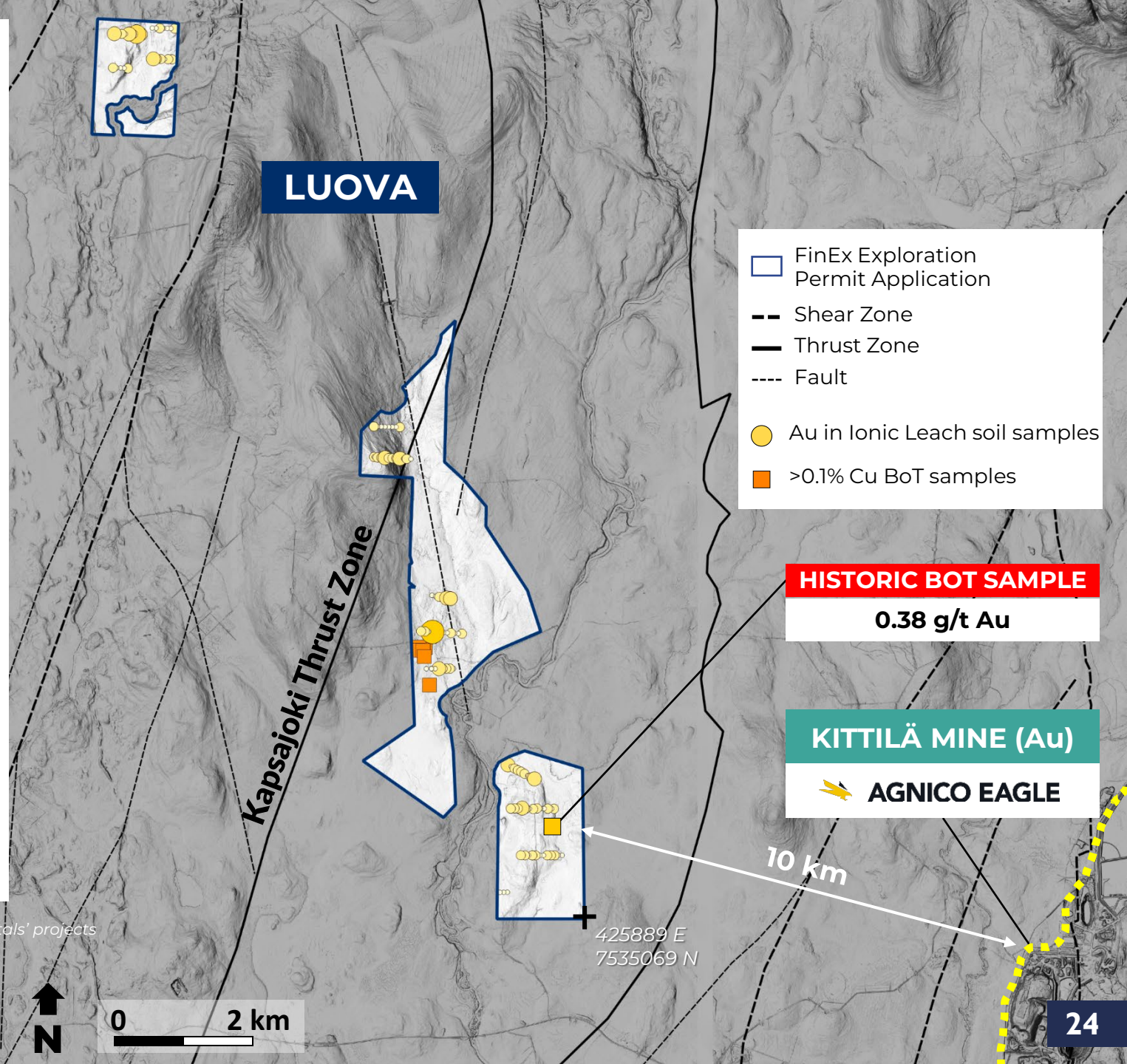
## Historical data:

Base of Till (BoT) sampling campaigns by Outokumpu (up to 0.49% Cu) & Agnico Eagle (up to 0.38 g/t Au). Anomalous zones remain undrilled

## Ingredients for orogenic gold deposit:

1. Thick successions of Fe-tholeiites (source rocks for Au)
2. Extensive shear zones (conduit)
3. Graphitic tuffs and Banded Iron Formations (traps)
4. Proven endowment of the nearby areas

**FINEX**  
METALS



<sup>1</sup> Mineralization of adjacent projects may not be indicative on the mineralization on FinEx Metals' projects

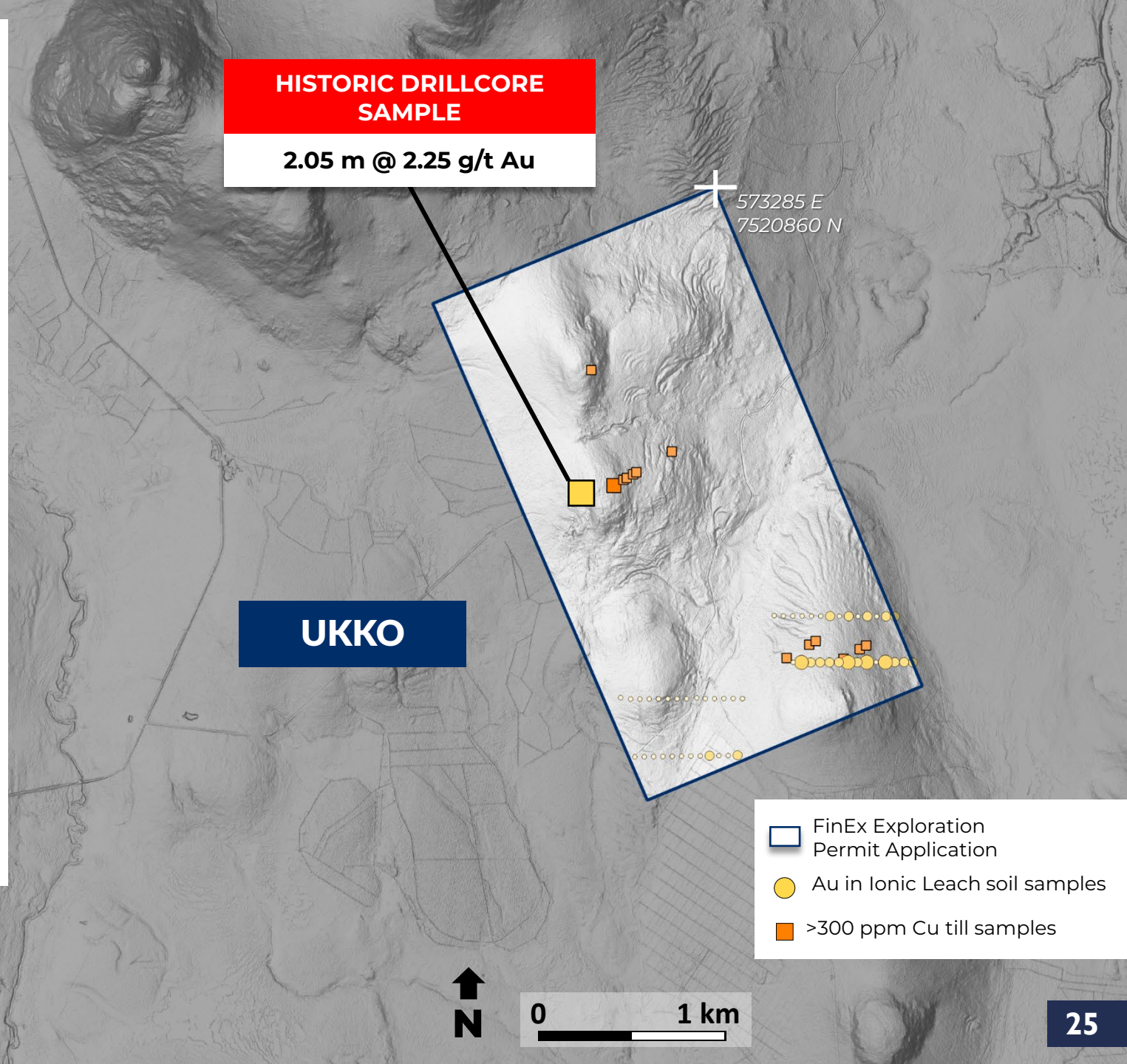
Data from Tukes, GTK & National Land Survey of Finland. Data as of 11.02.2025.  
Coordinate reference system: ETRS-TM35FIN

# Ukko Project

**Fully-permitted gold project targeting orogenic/metamorphosed epithermal deposits.** Prospective geological setting with Archean komatiites, mafic volcanics, mica schists and massive sulphide lenses

**Historical drilling** by Outokumpu (SK/RVK-4 DH) in 1985 yielded 2.05 m @ 2.25 g/t Au

Soil sampling detected new Au-Cu anomaly in the SE corner of project area. Au-Cu anomalies coincide with contact of high magnetic and high conductive geophysical anomalies



- FinEx Exploration Permit Application
- Au in Ionic Leach soil samples
- >300 ppm Cu till samples



# ESG Commitment

“FinEx is committed to sustainable practices throughout each facet of the business. We understand that a strong dedication to the environment, good governance and community relations not only adds value for our stakeholders, but it provides the opportunity to make a lasting impact and achieve sustainable growth.

*Our ESG objective is to deliver long-term stakeholder value through safe, low-cost mineral exploration in an environmentally and socially responsible manner.”*

**Tero Kosonen** – FinEx Metals Chairman

## Environmental

- Strive to exceed all regulatory & environmental requirements to ensure minimal impact to the environment
- Continually identify, analyze and manage environmental risks

## Social

- Work transparently with all stakeholders. Always act in a socially responsible manner
- Actively contribute to the communities in which we operate

## Governance

- Constant communication with our stakeholders
- Strictly adhere to all regulations while maintaining a safe and healthy work environment

**FINEX**  
METALS



Lapland Reindeer



Diamond Drill



ToB Drilling



Inspecting Core



Core Facility

Contact:

**Tero Kosonen**

Chairman & CEO

[tero@finexmetals.net](mailto:tero@finexmetals.net)

**FINEX**  
**METALS**

[FinExMetals.net](http://FinExMetals.net)

